



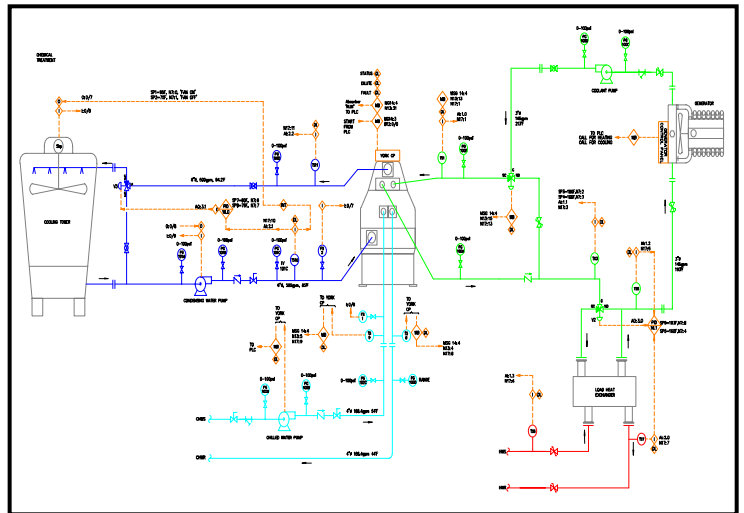
Total CHP thermal solution for onsite generation - the Integrated Cooling & Heating Module

Integrated CHP Systems Corp. introduces the first purpose designed, absorption based cooling and heating packaged plant specifically designed for use with internal combustion engine generators from 250 kW to 2,000 kW. The Integrated Cooling & Heating Module or **ICHM** offers multiple advantages over traditional field-erected systems including:



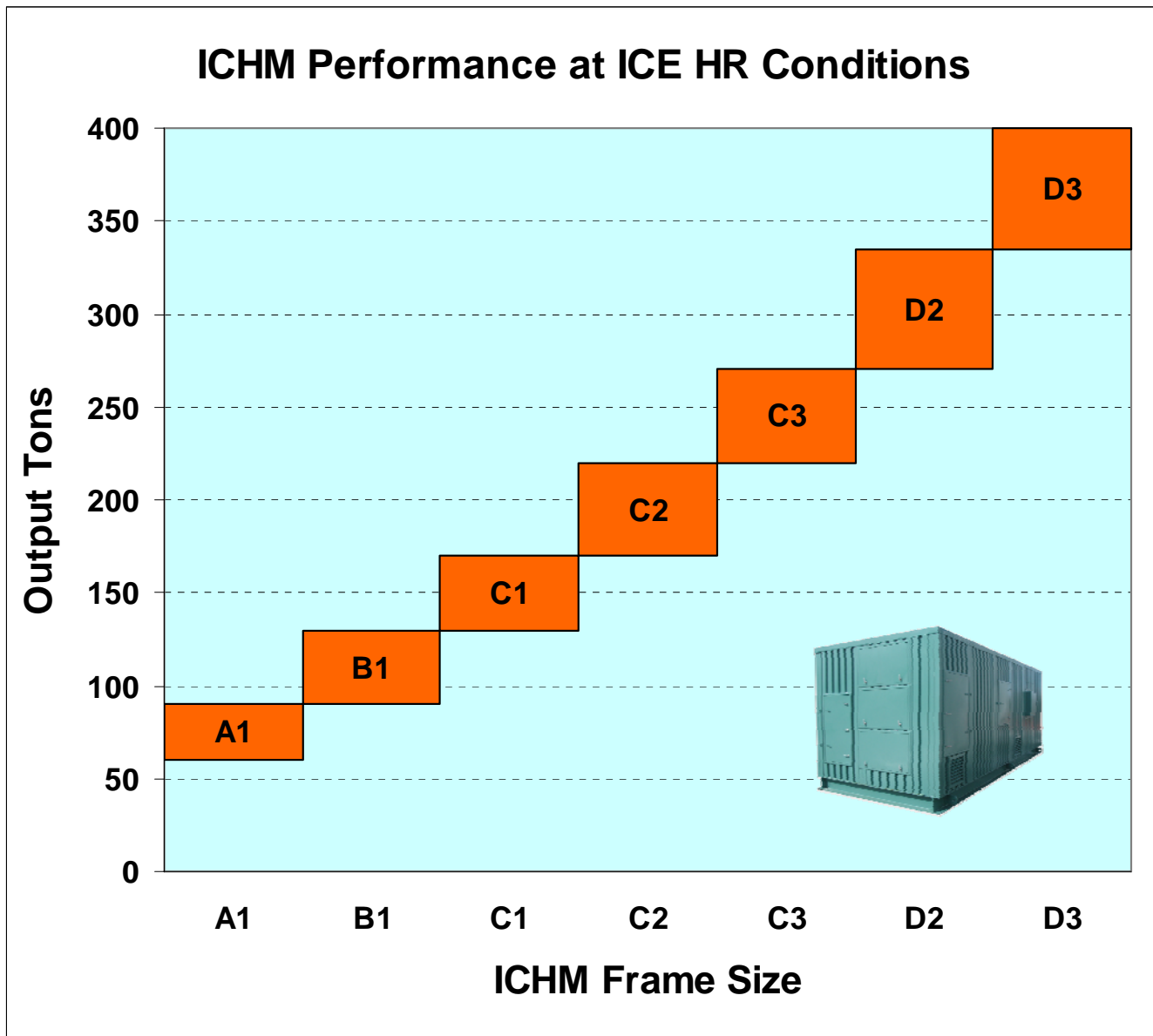
- ◆ Pre-Engineered and Prefabricated
- ◆ Optimized for specific engine based Cooling, Heating & Power (CHP) applications.
- ◆ Cost Effective – saves 30% on installed cost.
- ◆ Single Source Responsibility – Design, Fabrication & Performance.
- ◆ National Service Network – service through York International.

A significant barrier to wider implementation of CHP systems is proper integration of power and thermal technologies. This issue is addressed with the **ICHM** modular approach to design specifically based on the prime mover characteristics. The **ICHM** is a complete, integrated thermal system designed for CHP applications. Its performance is matched with the best reciprocating engine generators in the 250 kW to 2 MW size class. The **ICHM** scope includes a weatherized cooling/heating module, cooling tower and PLC based thermal system controller.



The **ICHM** controller provides remote control and data acquisition through a 2-wire Modbus connection. The **ICHM** is a complete, pre-engineered thermal plant designed to optimize heat recovery and provide chilled and hot water to the building.

YORK International provides nationwide service and maintenance for the complete ICHM including cooling tower and accessories.



Each ICHM frame size provides varying tonnage depending on engine heat recovery characteristics.

